



## CLEM JONES TUNNEL

# PROJECT UPDATE

DECEMBER 2009



## TUNNEL COMPLETION IS JUST AROUND THE CORNER

**As Brisbane edges closer to the historic opening of its first-ever major tunnel, work is fast progressing on the finishing touches.**

All excavation and concrete tunnel lining is complete. Construction is now also complete for the smoke duct ceiling, an important safety feature which will allow the tunnel to be quickly cleared of smoke in case of emergency.

The final concrete road pavement has already been laid, and the installation of concrete traffic barriers and tunnel wall lining panels is well advanced.

The mechanical and electrical team is busy installing lights, telecommunications and more than 100 jet fans. Testing and commissioning is now under way bringing each of the systems online one by one.

Above ground, the distinctive canopies covering the tunnel entry and exit points are complete and visible to motorists at Shafston Avenue and Woolloongabba, while work continues to install the massive 63m long structure at Bowen Hills.

*The canopy covering the entry and exit points at Shafston Avenue, Kangaroo Point.*

*The 6.8km CLEM7 will enable Brisbane motorists to avoid up to 24 sets of traffic lights as they travel below Fortitude Valley, the Story Bridge, Kangaroo Point and Woolloongabba.*



AN INITIATIVE OF



*Dedicated to a better Brisbane*

# GET TRAINING FOR BRISBANE'S FIRST TUNNEL FUN RUN!

Be part of history in the making by getting straight to the CLEM7 Fun Run as part of the tunnel's grand opening celebrations in early 2010!

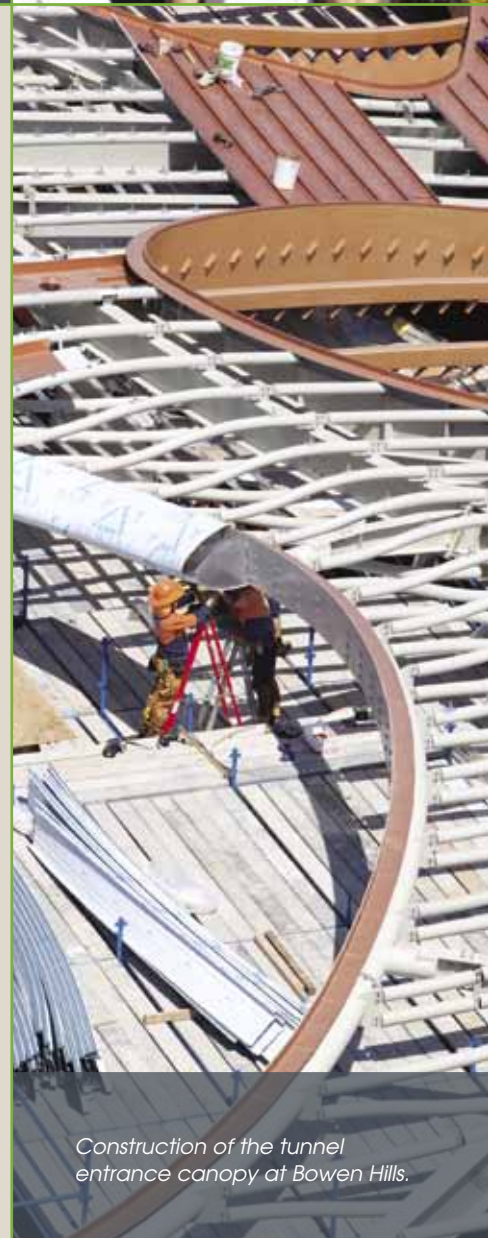
Anyone can take part in the 10km Fun Run, which will start and finish at the Bowen Hills tunnel entrance. Participants will run through the entire tunnel and back, running twice under the Brisbane River.

The Fun Run will form part of the wider opening celebrations, tipped to give Brisbane an exclusive chance to walk through the CLEM7 prior to its official opening to traffic.

**Register your interest at [www.clem7.com.au](http://www.clem7.com.au), and keep an eye out for more details running in soon!**



## CLEM7 AND CONNECTING ROADS



Construction of the tunnel entrance canopy at Bowen Hills.



*The tunnel is monitored 24 hours a day at the Tollway Control Centre.*

## DRIVE THE CLEM7 WITH SAFETY IN MIND

Brisbane's first major tunnel will be a faster, more reliable way for motorists to get straight to where they're going, with the added comfort of knowing the CLEM7 has been designed with safety in mind.

State-of-the-art features and systems will operate inside the CLEM7 24 hours a day, 7 days a week.

The tunnel consists of two parallel tubes, with each dedicated to north or southbound traffic. For safe access in emergencies, the tubes are joined by 10m long cross-passages which are located every 120m throughout the tunnel.

In the event of a fire an overhead sprinkler/water system is in place, while extinguishers, hoses and emergency phones connecting to the Tollway Control Centre are located every 60m.

The tunnel is monitored by the Tollway Control Centre, with more than 250 cameras operating at all times. An experienced team of operators can also transmit direct messages to motorists via radio broadcast.

Safety for motorists has been further enhanced through prohibiting placard vehicles carrying dangerous goods, and over-dimension vehicles from entering the tunnel.

## SAFE TRAVEL ALSO DEPENDS ON YOU

### **ALWAYS DRIVE SAFELY**

- Follow variable speed and message signs.
- Ensure your radio is on and listen for announcements.
- Avoid changing lanes or overtaking.
- Avoid wearing sunglasses.
- Switch on your headlights.

### **IF YOU BREAK DOWN**

- If your vehicle has a problem, pull over and switch on your hazard lights and radio.
- Stay in the vehicle unless you are otherwise instructed.
- An incident response vehicle will be dispatched to assist you.



# FLOW TAG ACCOUNT

**Brisbane motorists can now sign up online for a new FLOW Tag Account.**

Just like comparable products, a FLOW Tag is a small device you easily attach to your windscreen and use on any tollway. Regular tollway users with any type of vehicle (except motorcycles), including small-to-medium business and heavy vehicle owners are recommended to get a FLOW Tag.

### Why go with a FLOW Tag Account?

- Invest only \$25 in pre-paid toll credit, and you're ready to FLOW!
- There is no limit to how many vehicles can share one FLOW Tag
- Tags can be used on ALL tollways in Brisbane and Australia
- NO charge for manual top-up
- NO minimum use charges
- FREE quarterly printed statements



| How it works  | What that means for you   |
|---|---|
| Just \$25 worth of pre-paid tolls is required to open your FLOW Tag account.  | Your money is precious, so why outlay huge amounts to get FLOWing?  |
| FLOW Tags work on any tollway.  | Go with a FLOW Tag and it's all you need to travel on any of Australia's tollways.                              |
| Link as many FLOW Tags as you like to one account.  | Family members, friends, business vehicles – all can be linked and paid through the one account.                |
| One FLOW Tag can be used by any vehicle.  | Just ONE FLOW Tag can be shared by the whole family.  |
| Receive a printed quarterly statement at no charge.   | Keep track of your travel for leisure or business purposes simply and at no cost.                               |
| Your pre-paid toll credits never expire.  | You will never forfeit the FLOW Tag credits you put onto your account, no matter how long you take to use them. |
| No minimum use charges for FLOW Tag accounts, and no monthly or account keeping fees.                                   | It doesn't matter how much you do or don't use your account. We won't charge you either way.                    |
| Statement and transaction records are available online for 12 months.   | The easiest way to track your use is to go online.  |
| You can choose to top up the credit in your FLOW account automatically or manually, with no additional fees or charges. | Top up your account the way that suits you best with no penalties and no stress!                                |

**Set up a FLOW Tag Account online now at [flowtoll.com.au](http://flowtoll.com.au) or call 13 13 57**

### CONTACT US

For more information about the project:  
 Call us on **1800 22 36 37**  
 Visit the website **[clem7.com.au](http://clem7.com.au)**  
 Or email **[contactus@nsbt.incite.com.au](mailto:contactus@nsbt.incite.com.au)**  
 For investor enquiries please call **1300 720 985**



AN INITIATIVE OF



*Dedicated to a better Brisbane*